

# JEDNOSOBAN

TIP 2

LAMELA 2

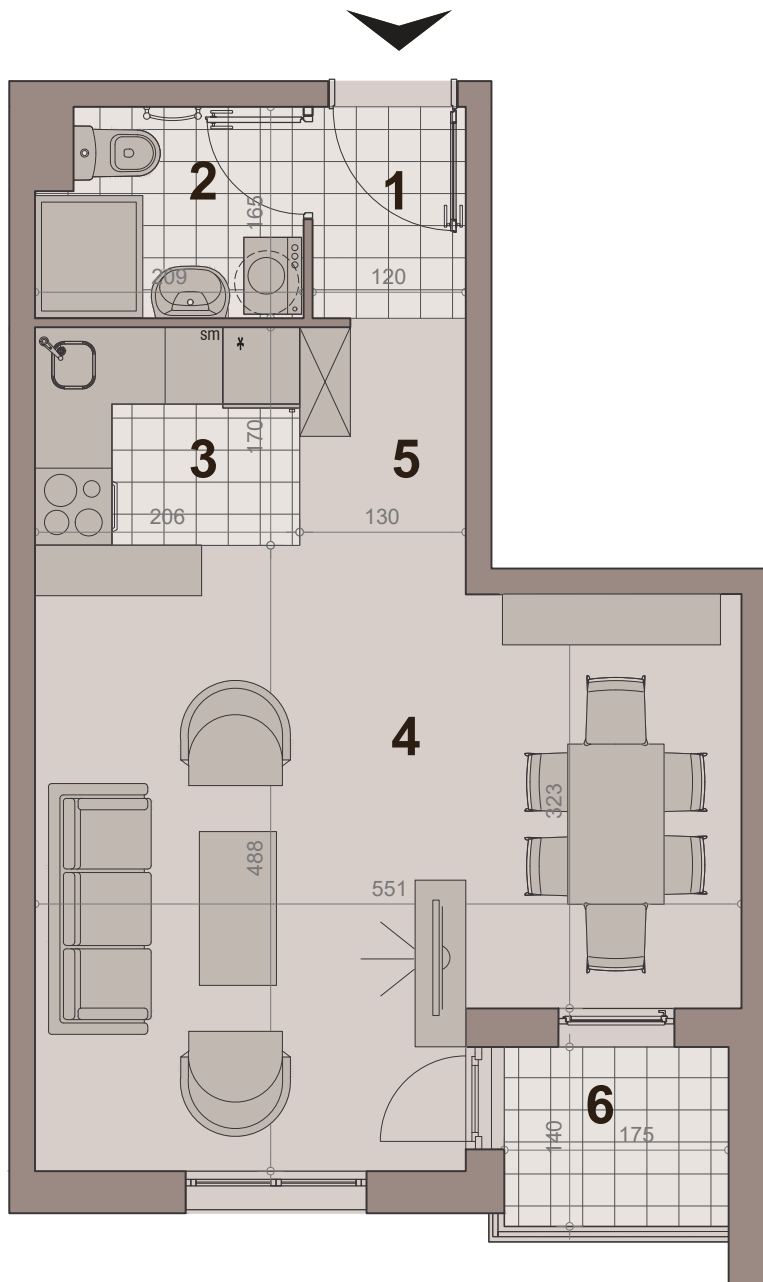
STAN BR. 06,13,20,27,34

površina : 36.09m<sup>2</sup>

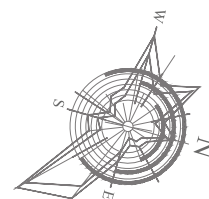
etaža: prizemlje/ I sprat/ II sprat/ IIIsprat/ IV sprat



НАСЕЉЕ  
ДУНАВСКИ ВЕНАЦ

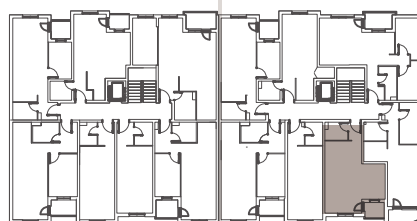


br.	namena	P (m <sup>2</sup> )
1	hodnik-ulaz	1.91m <sup>2</sup>
2	kupatilo	3.48m <sup>2</sup>
3	kuhinja	4.05m <sup>2</sup>
4	dn boravak sa trpezarijom	22.65m <sup>2</sup>
5	hodnik	1.54m <sup>2</sup>
6	terasa	2.45m <sup>2</sup>
<b>NETO POVRŠINA</b>		<b>36.09m<sup>2</sup></b>



LAMELA 1

LAMELA 2



ULICA Anova 64

ULICA GRGE ANDRIJANOVIĆA 7.DEO