

JEDNOIPOSOBAN

TIP 7

LAMELA 2

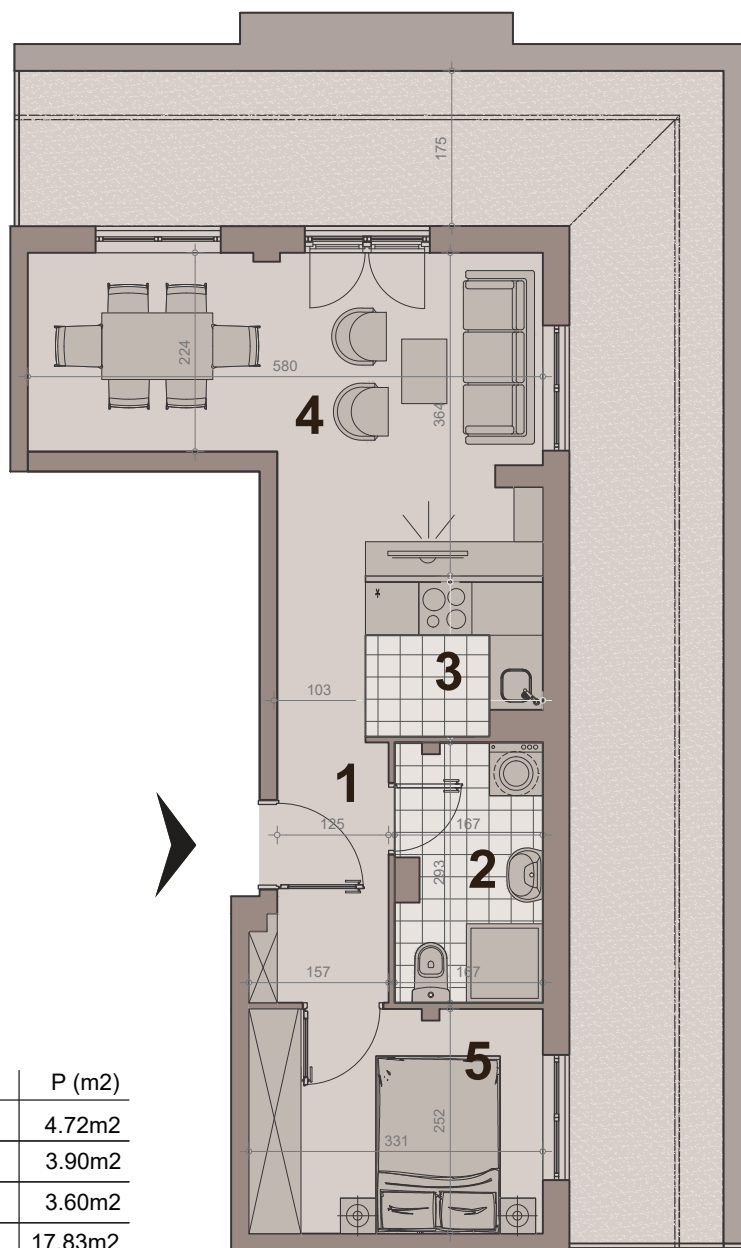
STAN BR. 37

površina : 38.18m²

etaža: povučeni sprat

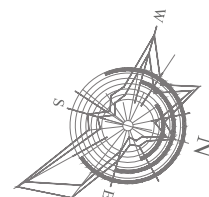


НАСЕЉЕ
ДУНАВСКИ ВЕНАЦ



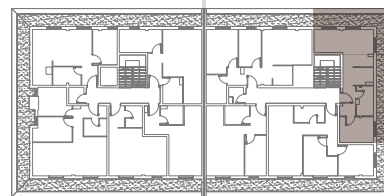
br.	namena	P (m ²)
1	hodnik-ulaz	4.72m ²
2	kupatilo	3.90m ²
3	kuhinja	3.60m ²
4	dn boravak sa trpezarijom	17.83m ²
5	sp soba	8.13m ²
NETO POVRŠINA		38.18m²

pripadajuća terasa 33.72m²



LAMELA 1

LAMELA 2



ULICA nova 64

ULICA GRGE ANDRIJANOVIĆA 7.DEO