

JEDNOIPOSOBAN

TIP 6

LAMELA 2

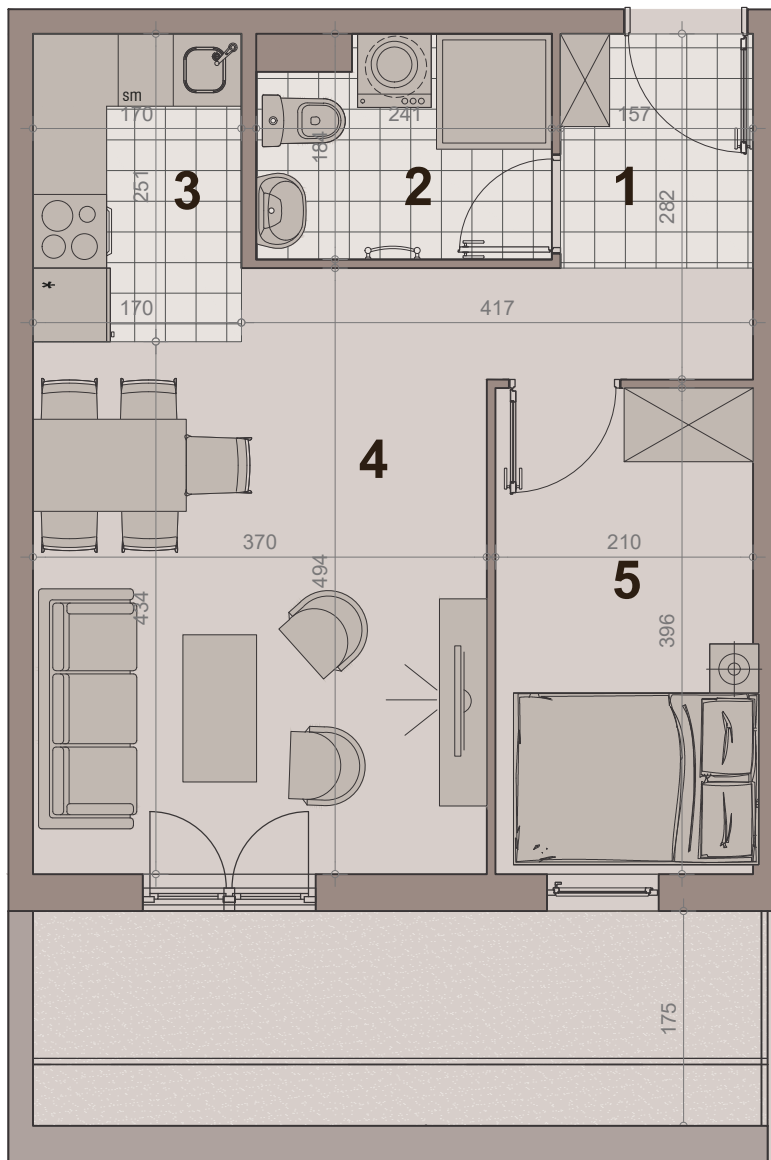
STAN BR. 36

površina : 37.84m²

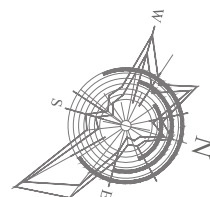
etaža:povučeni sprat



НАСЕЉЕ
ДУНАВСКИ ВЕНАЦ

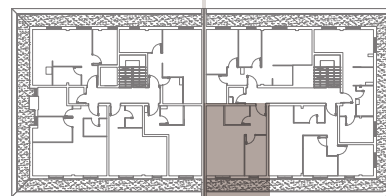


br.	namena	P (m ²)
1	hodnik-ulaz	4.82m ²
2	kupatilo	4.06m ²
3	kuhinja	4.14m ²
4	dn boravak sa trpezarijom	16.75m ²
5	sp soba	8.07m ²
NETO POVRŠINA		37.84m²
pripadajuća terasa		10.41m ²



LAMELA 1

LAMELA 2



ULICA nova 64

ULICA GRGE ANDRIJANOVIĆA 7.DEO