

JEDNOIPOSOBAN

TIP 5

LAMELA 2

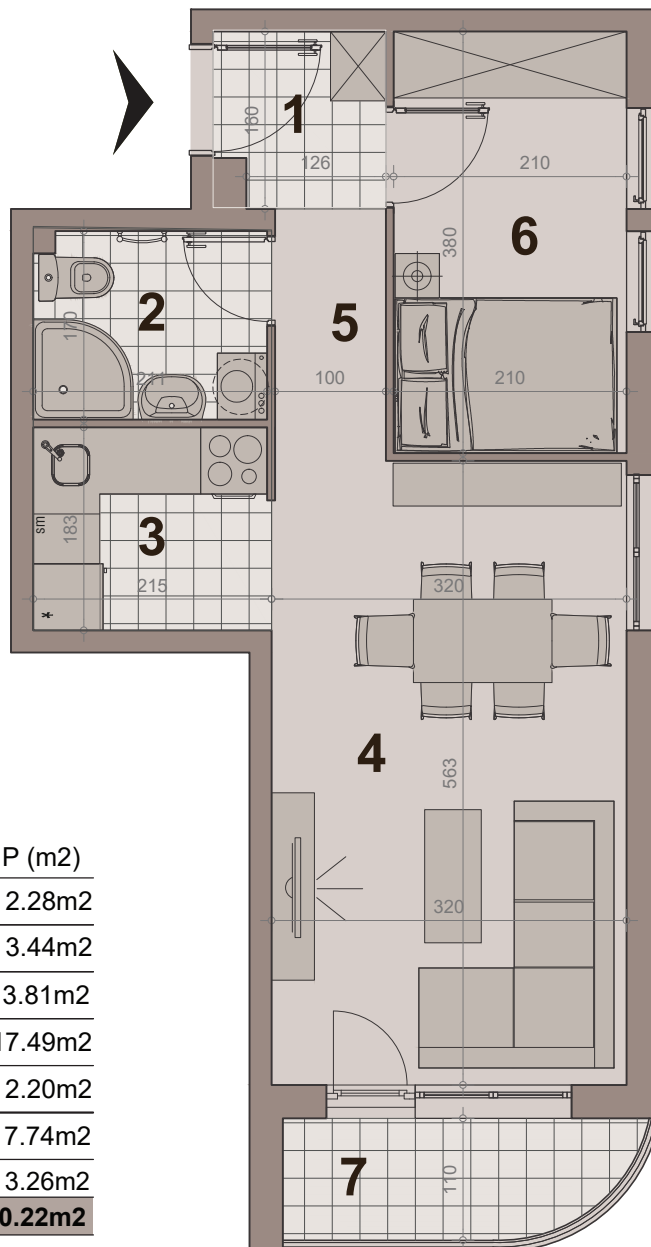
STAN BR. 05,12,19,26,33

površina : 40.22m²

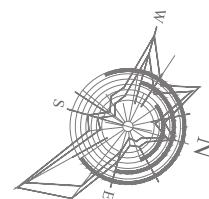
etaža: prizemlje/ I sprat/ II sprat/ III sprat/ IV sprat



НАСЕЉЕ
ДУНАВСКИ ВЕНАЦ

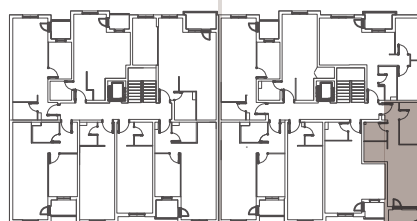


| br. | namena | P (m ²) |
|----------------------|---------------------------|---------------------------|
| 1 | hodnik-ulaz | 2.28m ² |
| 2 | kupatilo | 3.44m ² |
| 3 | kuhinja | 3.81m ² |
| 4 | dn boravak sa trpezarijom | 17.49m ² |
| 5 | hodnik | 2.20m ² |
| 6 | sp soba | 7.74m ² |
| 7 | terasa | 3.26m ² |
| NETO POVRŠINA | | 40.22m² |



LAMELA 1

LAMELA 2



ULICA Anova 64

ULICA GRGE ANDRIJANOVIĆA 7.DEO