

JEDNOIPOSOBAN

TIP 3

LAMELA 1

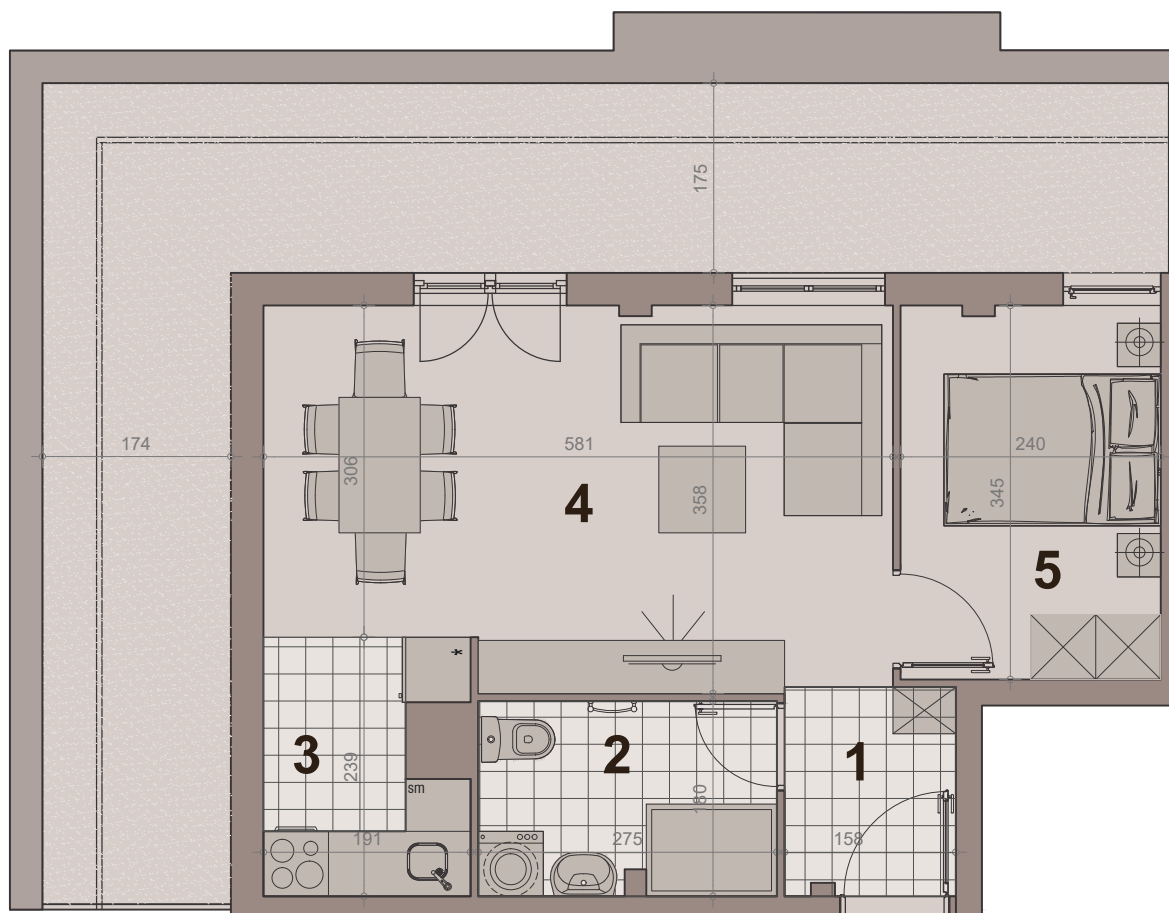
STAN BR. 37

površina : 38.87m²

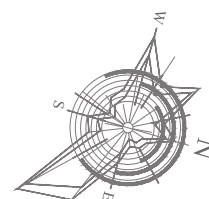
etaža: povučeni sprat



НАСЕЉЕ
ДУНАВСКИ ВЕНАЦ

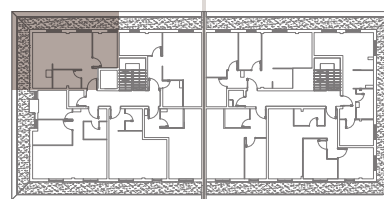


br.	namena	P (m ²)
1	hodnik-ulaz	2.95m ²
2	kupatilo	4.75m ²
3	kuhinja	4.01m ²
4	dn boravak sa trepezarijom	19.03m ²
5	sp soba	8.13m ²
NETO POVRŠINA		38.87m²
pripadajuća terasa		28.62m ²



LAMELA 1

LAMELA 2



ULICA nova 64

ULICA GRGE ANDRIJANOVIĆA 7.DEO