

JEDNOIPOSOBAN

TIP 2

LAMELA 1

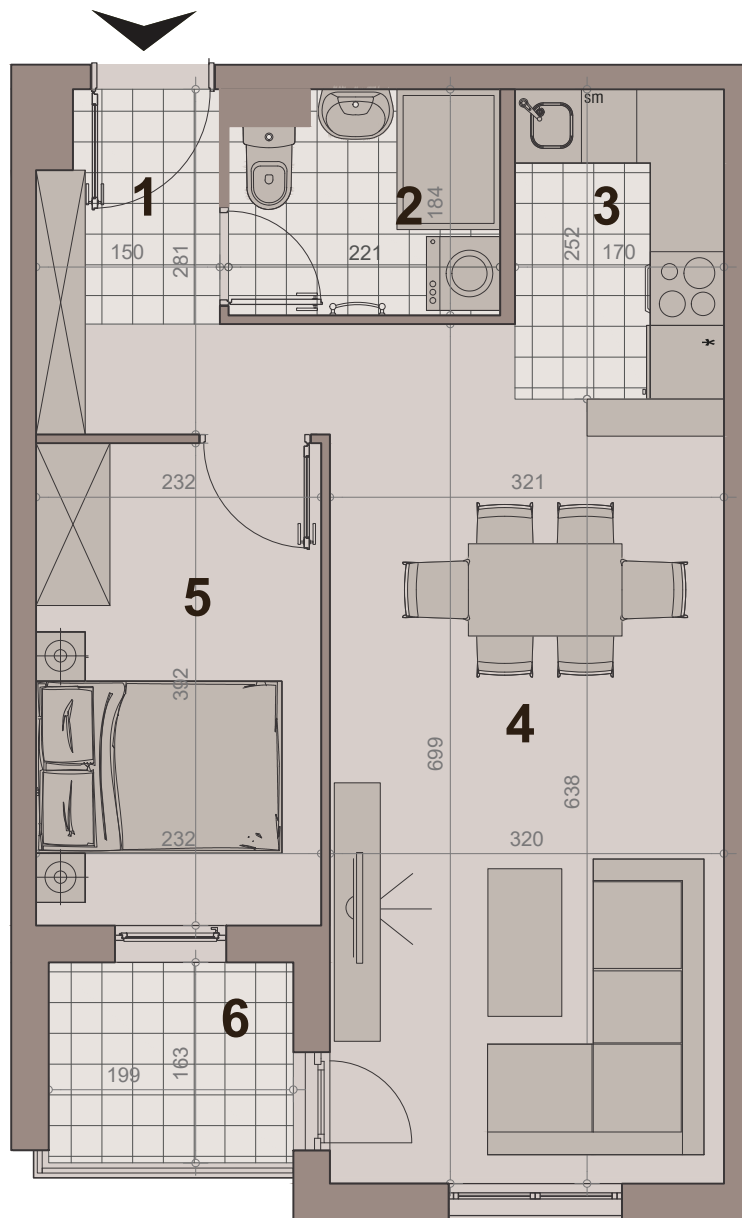
STAN BR. 05,12,19,26,33

površina : 45.36m²

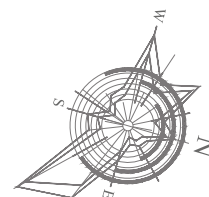
etaža: prizemlje/ I sprat/ II sprat / III sprat/ IV sprat



НАСЕЉЕ
ДУНАВСКИ ВЕНАЦ

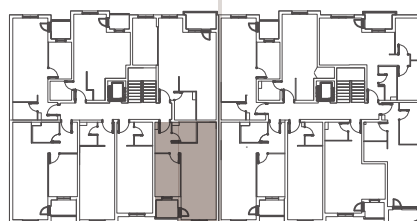


br.	namena	P (m ²)
1	hodnik-ulaz	4.66m ²
2	kupatilo	3.75m ²
3	kuhinja	4.14m ²
4	dn boravak sa trpezarijom	20.74m ²
5	sp soba	8.82m ²
6	terasa	3.25m ²
NETO POVRŠINA		45.36m²



LAMELA 1

LAMELA 2



ULICA Anova 64

ULICA GRGE ANDRIJANOVIĆA 7.DEO

JEDNOIPOSOBAN

TIP 2

LAMELA 1

STAN BR. 08,15,22,29

LAMELA 2

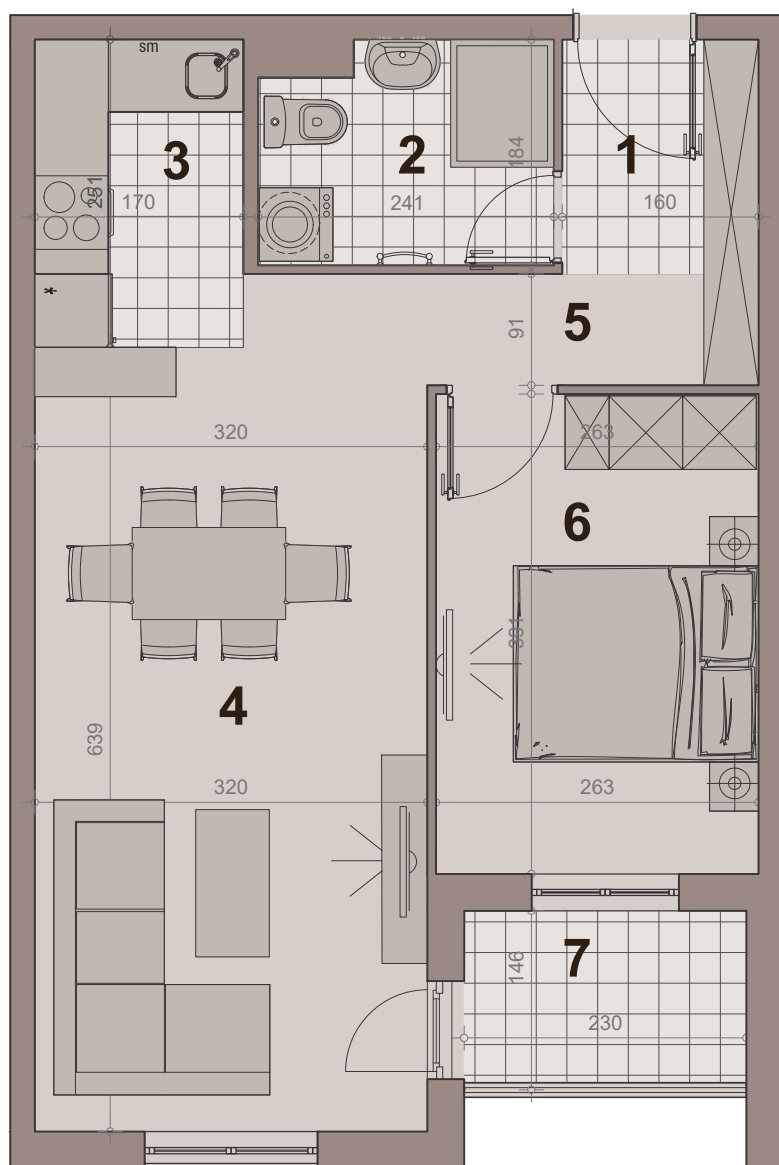
STAN BR. 08,15,22,29

površina : 47.46m²

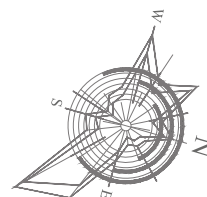
etaža: I sprat/ II sprat / III sprat/ IV sprat



НАСЕЉЕ
ДУНАВСКИ ВЕНАЦ

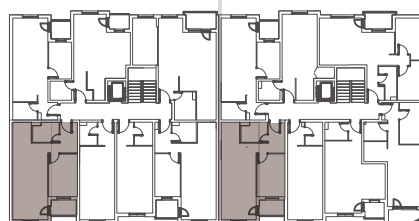


br.	namena	P (m ²)
1	hodnik-ulaz	4.37m ²
2	kupatilo	4.06m ²
3	kuhinja	4.14m ²
4	dn boravak sa trpezarijom	20.71m ²
5	hodnik	0.96m ²
6	sp soba	10.00m ²
7	terasa	3.22m ²
NETO POVRŠINA		47.46m²



LAMELA 1

LAMELA 2



ULICA Anova 64

ULICA GRGE ANDRIJANOVIĆA 7.DEO