

JEDNOIPOSOBAN



НАСЕЉЕ
ДУНАВСКИ ВЕНАЦ

TIP 1

LAMELA 1

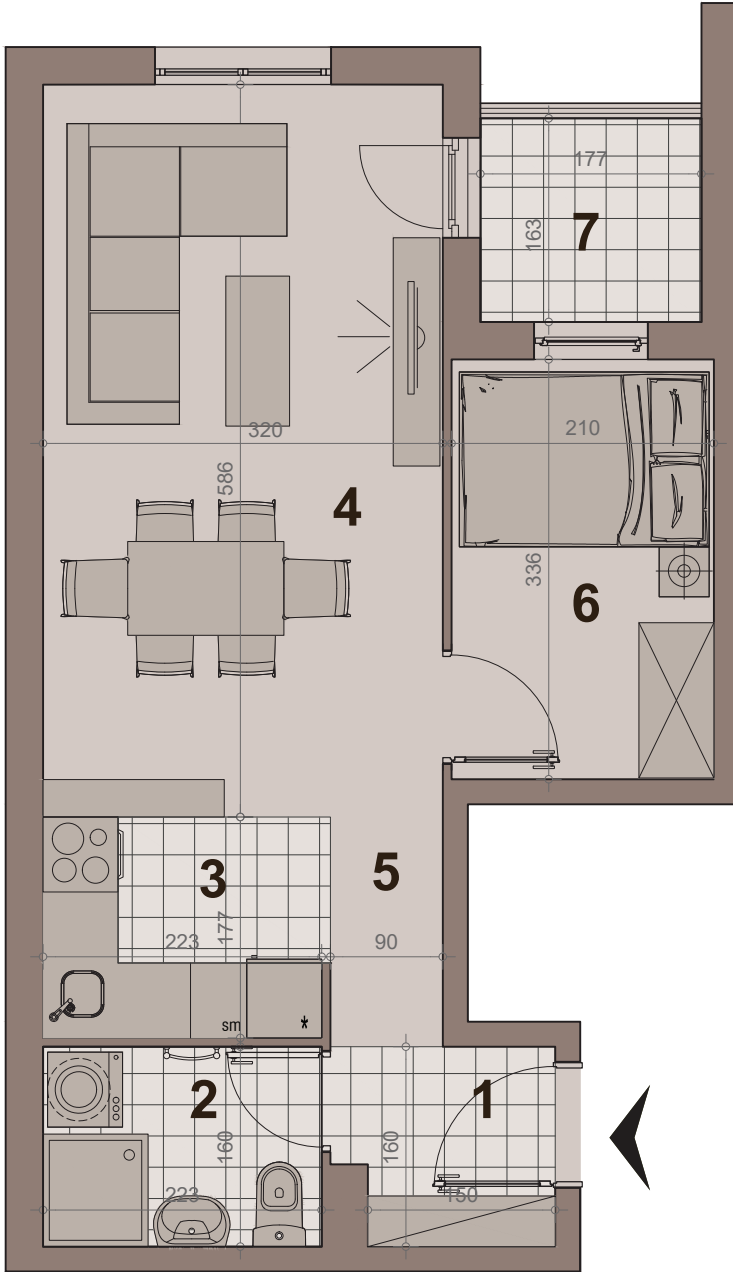
STAN BR. 02,09,16,23,30

LAMELA 2

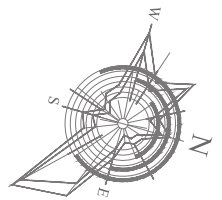
STAN BR. 02,09,16,23,30

površina : 39.50m²

etaža: prizemlje/ I sprat/ II sprat/ III sprat/ IV sprat

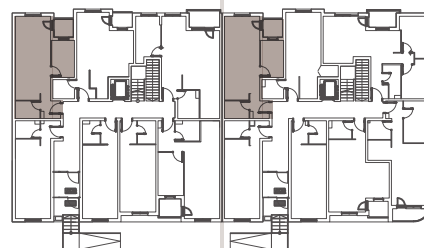


br.	namena	P (m ²)
1	hodnik-ulaz	2.50m ²
2	kupatilo	3.46m ²
3	kuhinja	3.85m ²
4	dn boravak sa trpezarijom	18.20m ²
5	hodnik	1.60m ²
6	sp soba	7.00m ²
7	terasa	2.89m ²
NETO POVRŠINA STANA		39.50m²



LAMELA 1

LAMELA 2



ULICA ANOVA 64

ULICA GRGE ANDRIJANOVIĆA 7.DEO