

GARSONJERA

TIP 2

LAMELA 1

STAN BR. 07,14,21,28,35

LAMELA 2

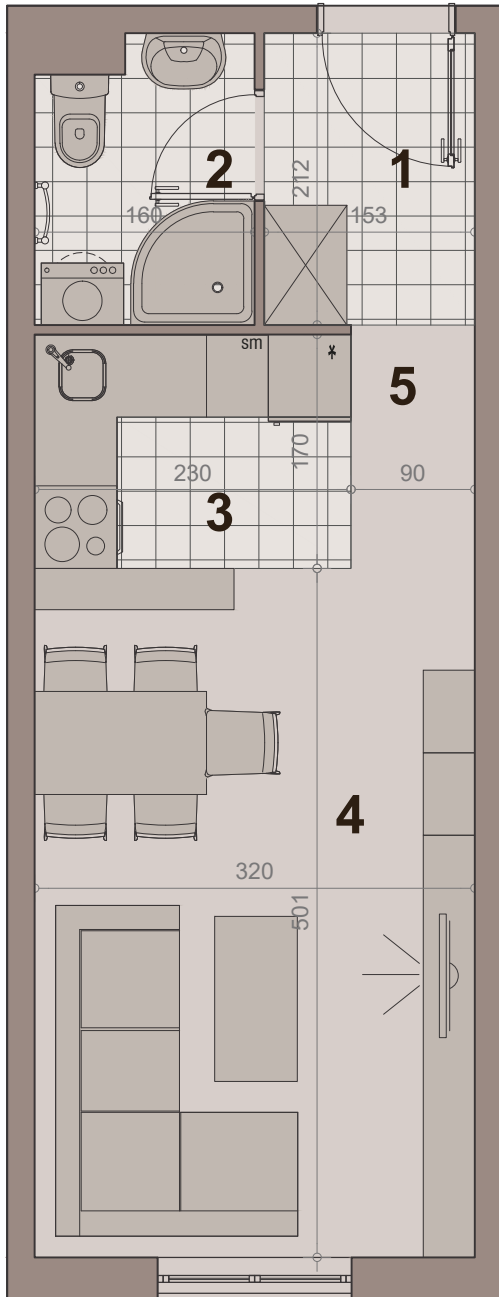
STAN BR. 07,14,21,28,35

površina : 27.31m²

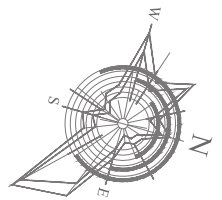
etaža: prizemlje/ I sprat, II sprat, III sprat, IV sprat



НАСЕЉЕ
ДУНАВСКИ ВЕНАЦ

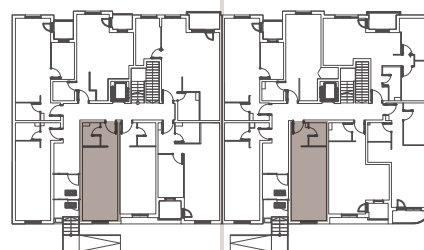


br.	namena	P (m ²)
1	hodnik-ulaz	3.14m ²
2	kupatilo	3.28m ²
3	kuhinja	3.80m ²
4	dn boravak sa trpezarijom	15.55m ²
5	hodnik	1.54m ²
NETO POVRŠINA		27.31m²



LAMELA 1

LAMELA 2



ULICA ANOVA 64

ULICA GRGE ANDRIJANOVIĆA 7.DEO

GARSONJERA

TIP 2

LAMELA 1

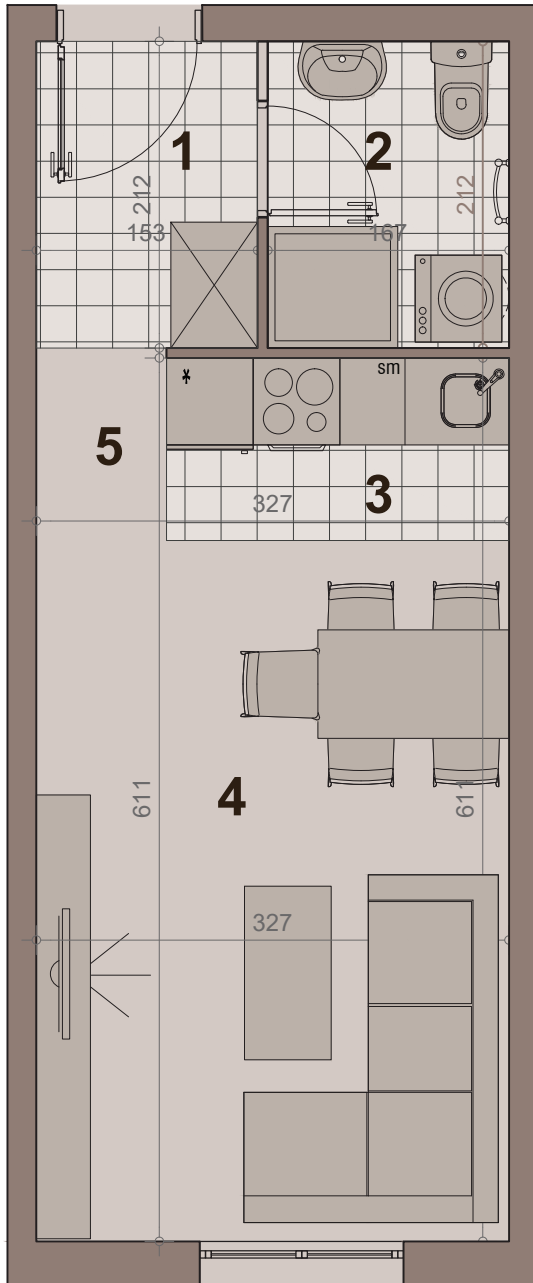
STAN BR. 06,13,20,27,34

površina : 26.01m²

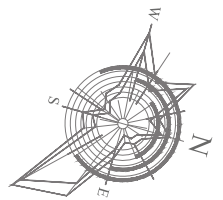
etaža: prizemlje/ I sprat, II sprat, III sprat, IV sprat



НАСЕЉЕ
ДУНАВСКИ ВЕНАЦ

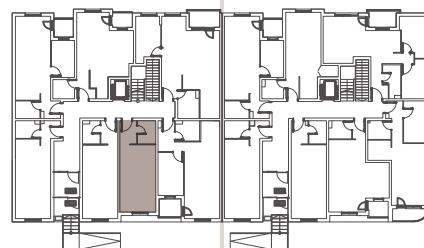


br.	namena	P (m ²)
1	hodnik-ulaz	3.14m ²
2	kupatilo	3.43m ²
3	kuhinja	2.74m ²
4	dn boravak sa trpezarijom	15.60m ²
5	hodnik	1.10m ²
NETO POVRŠINA		26.01m²



LAMELA 1

LAMELA 2



ULICA ANOVA 64

ULICA GRGE ANDRIJANOVIĆA 7.DEO