

DVOSOBAN

TIP 1

LAMELA 1

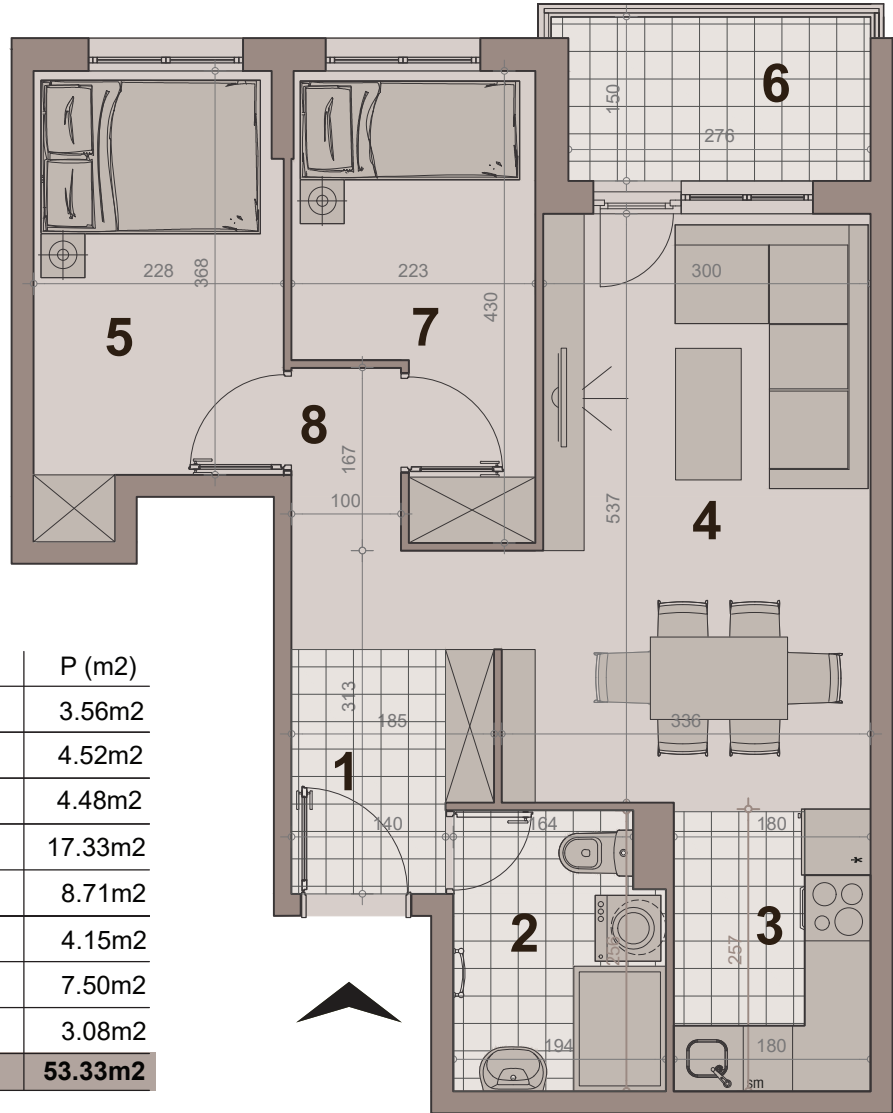
STAN BR. 04

površina : 53.33m²

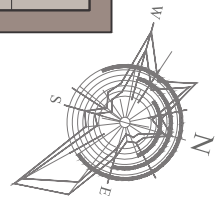
etaža: prizemlje



НАСЕЉЕ
ДУНАВСКИ ВЕНАЦ

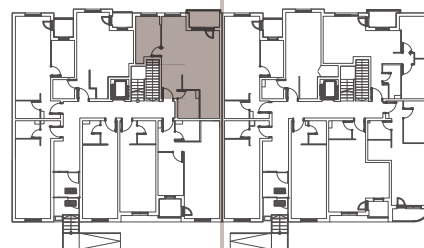


| br. | namena | P (m ²) |
|----------------------|---------------------------|---------------------------|
| 1 | hodnik-ulaz | 3.56m ² |
| 2 | kupatilo | 4.52m ² |
| 3 | kuhinja | 4.48m ² |
| 4 | dn boravak sa trpezarijom | 17.33m ² |
| 5 | sp soba | 8.71m ² |
| 6 | terasa | 4.15m ² |
| 7 | sp soba | 7.50m ² |
| 8 | hodnik | 3.08m ² |
| NETO POVRŠINA | | 53.33m² |



LAMELA 1

LAMELA 2



ULICA NOVA 64

ULICA GRGE ANDRIJANOVIĆA 7.DEO

DVOSOBAN

TIP 1

LAMELA 1

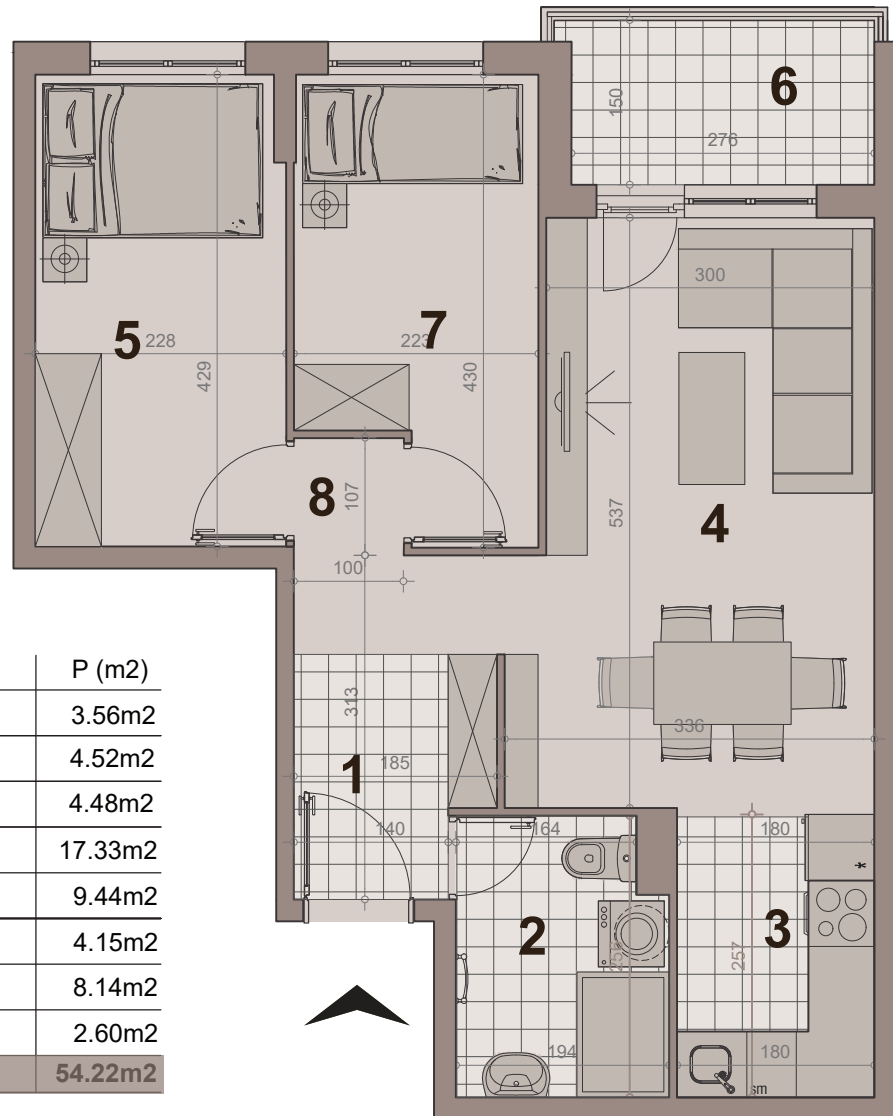
STAN BR. 11,18,25,32

površina : 54.22m²

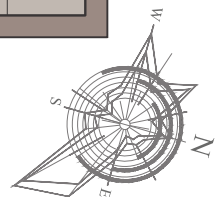
etaža: I sprat/ II sprat/ IIIsprat/ IV sprat



НАСЕЉЕ
ДУНАВСКИ ВЕНАЦ



| br. | namena | P (m ²) |
|----------------------|---------------------------|---------------------------|
| 1 | hodnik-ulaz | 3.56m ² |
| 2 | kupatilo | 4.52m ² |
| 3 | kuhinja | 4.48m ² |
| 4 | dn boravak sa trpezarijom | 17.33m ² |
| 5 | sp soba | 9.44m ² |
| 6 | terasa | 4.15m ² |
| 7 | sp soba | 8.14m ² |
| 8 | hodnik | 2.60m ² |
| NETO POVRŠINA | | 54.22m² |



LAMELA 1

LAMELA 2



ULICA Anova 64

ULICA GRGE ANDRIJANOVIĆA 7.DEO