

# DVOIPOSOBAN

TIP 3

LAMELA 2

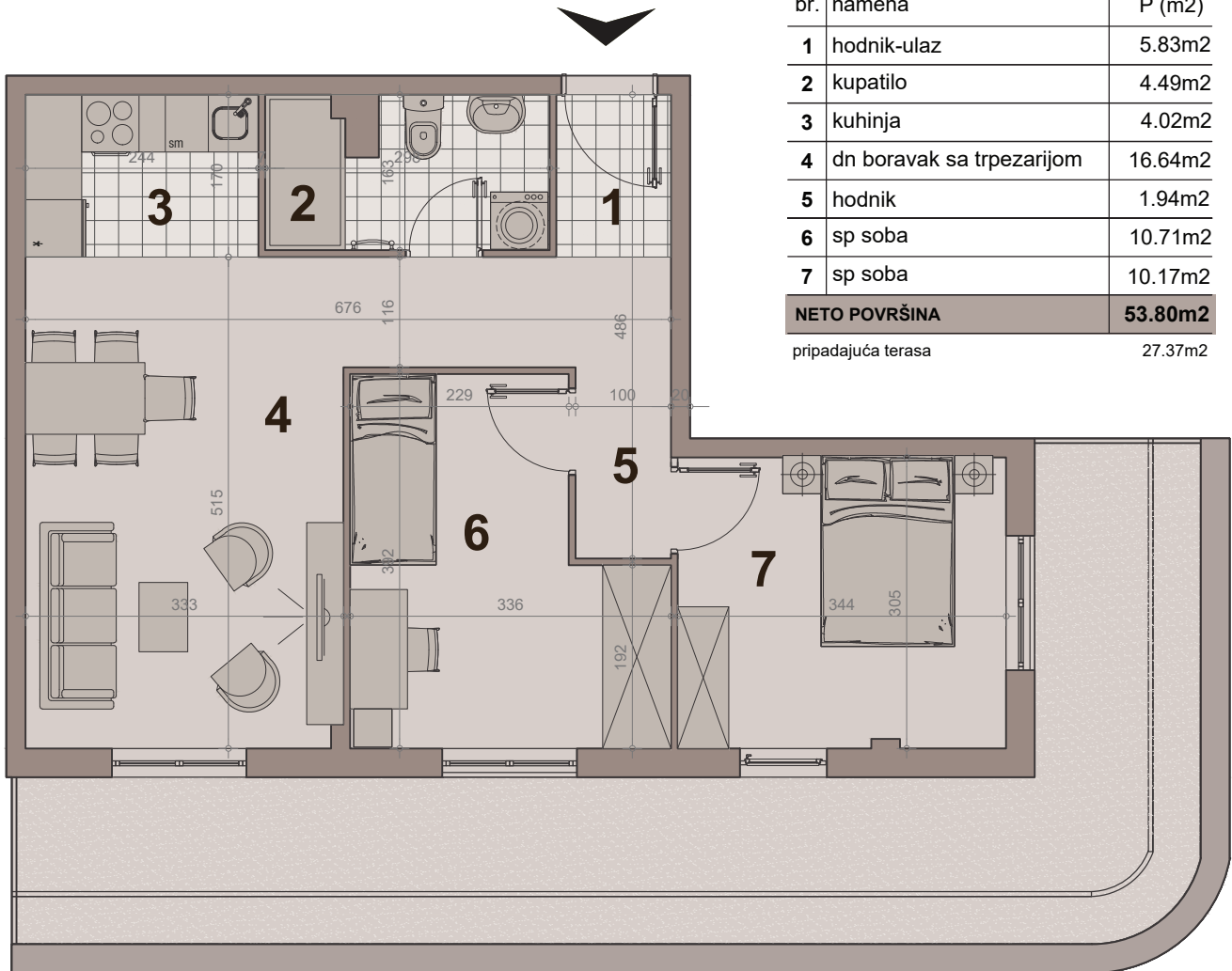
STAN BR. 39

površina : 53.80m<sup>2</sup>

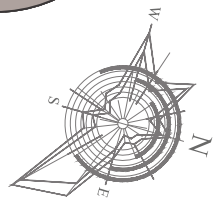
etaža:povučeni sprat



НАСЕЉЕ  
ДУНАВСКИ ВЕНАЦ

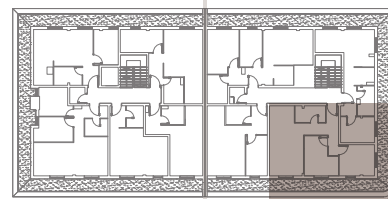


br.	namena	P (m <sup>2</sup> )
1	hodnik-ulaz	5.83m <sup>2</sup>
2	kupatilo	4.49m <sup>2</sup>
3	kuhinja	4.02m <sup>2</sup>
4	dn boravak sa trpezarijom	16.64m <sup>2</sup>
5	hodnik	1.94m <sup>2</sup>
6	sp soba	10.71m <sup>2</sup>
7	sp soba	10.17m <sup>2</sup>
<b>NETO POVRŠINA</b>		<b>53.80m<sup>2</sup></b>
pripadajuća terasa		27.37m <sup>2</sup>



LAMELA 1

LAMELA 2



ULICA nova 64

ULICA GRGE ANDRIJANOVIĆA 7.DEO