

DVOIPOSOBAN

TIP 2

LAMELA 2

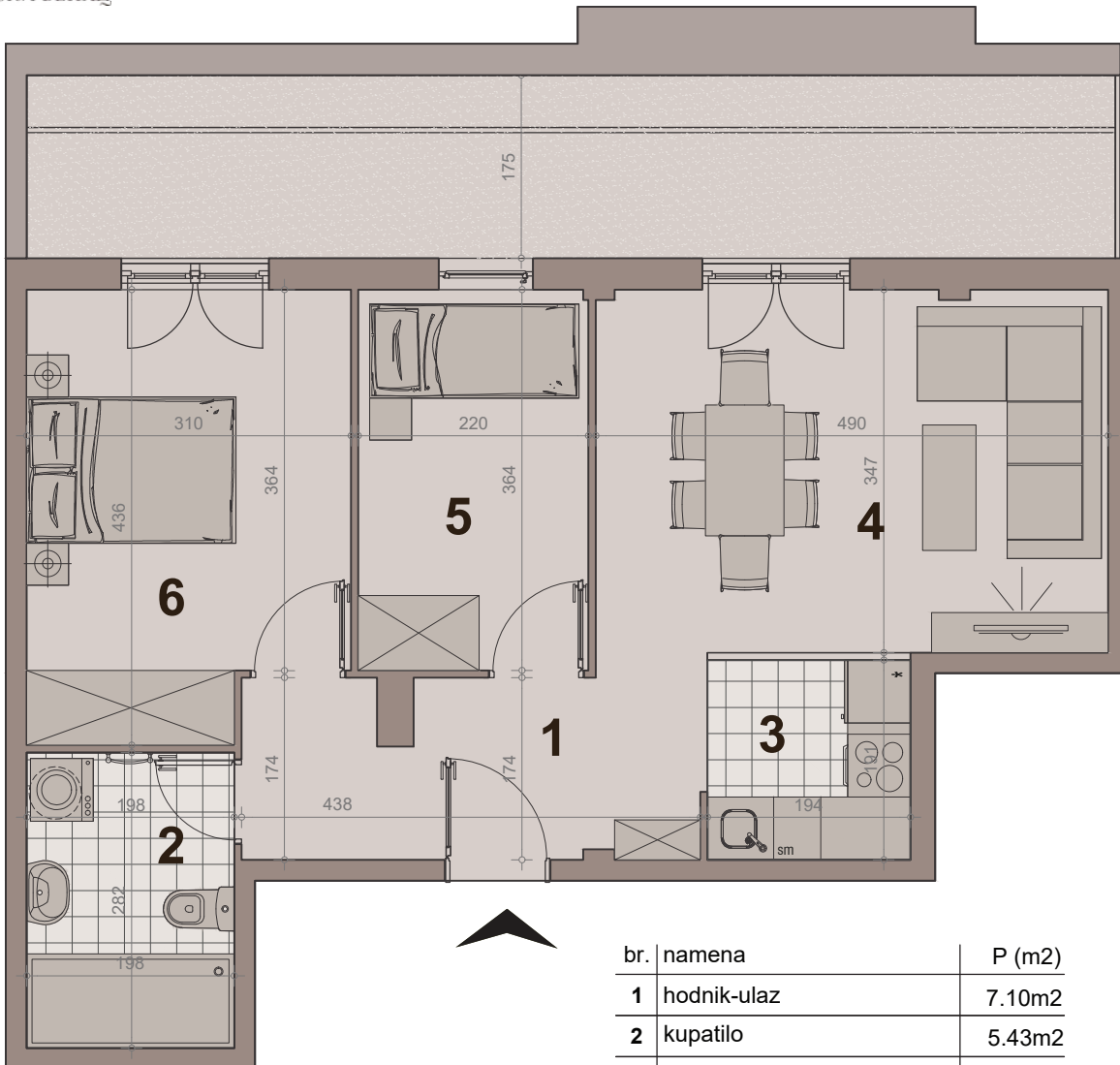
STAN BR. 37

površina : 52.96m²

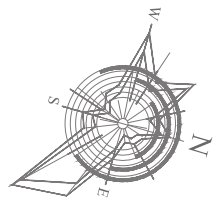
etaža:povučeni sprat



НАСЕЉЕ
ДУНАВСКИ ВЕНАЦ

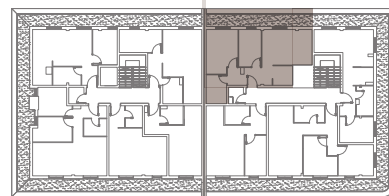


br.	namena	P (m ²)
1	hodnik-ulaz	7.10m ²
2	kupatilo	5.43m ²
3	kuhinja	3.66m ²
4	dn boravak	16.57m ²
5	sp soba	7.77m ²
6	sp soba	12.30m ²
NETO POVRŠINA		52.96m²
pripadajuća terasa		18.24m ²



LAMELA 1

LAMELA 2



ULICA nova 64

ULICA GRGE ANDRIJANOVIĆA 7.DEO