

DVOPIPOSOBAN

TIP 1

LAMELA 1

STAN BR. 36

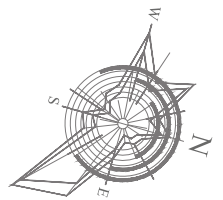
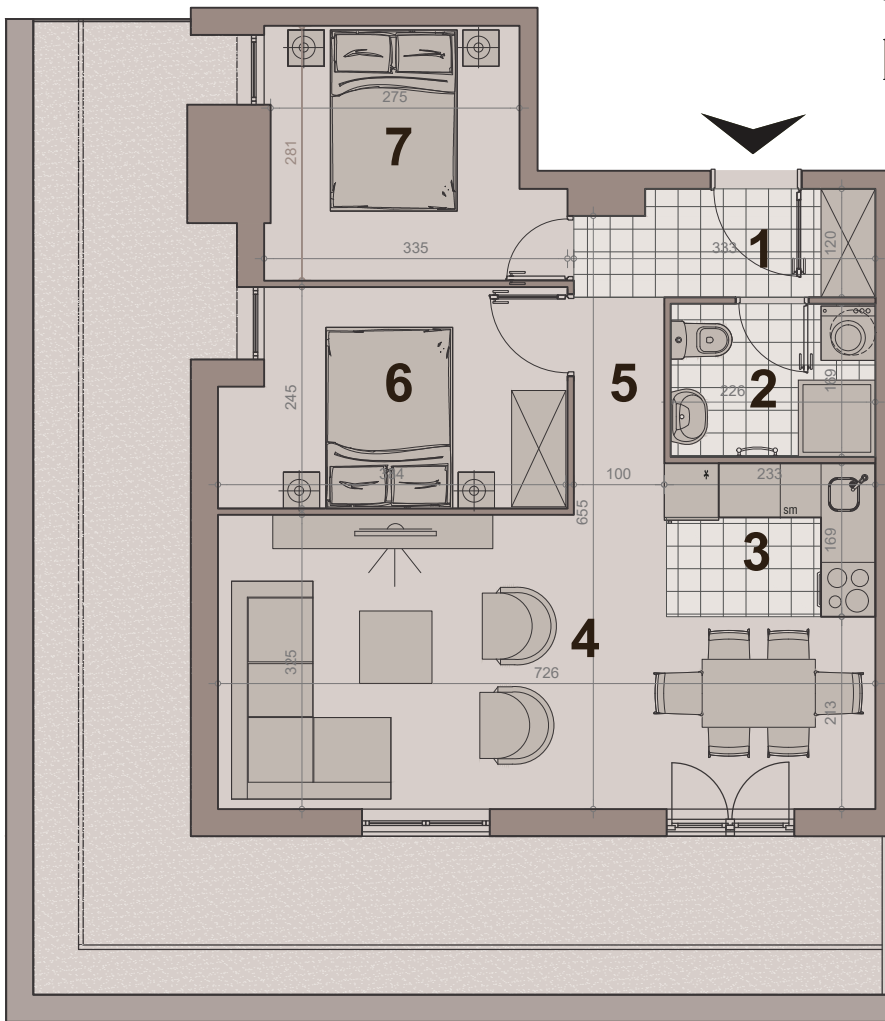
površina : 50.52m²

etaža:povučeni sprat



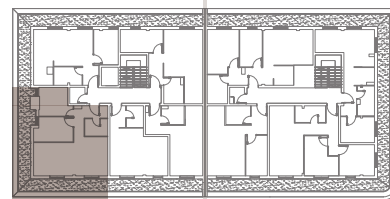
НАСЕЉЕ
ДУНАВСКИ ВЕНАЦ

br.	namena	P (m ²)
1	hodnik-ulaz	3.65m ²
2	kupatilo	3.70m ²
3	kuhinja	3.84m ²
4	dn boravak sa trpezarijom	20.35m ²
5	hodnik	2.32m ²
6	sp soba	8.66m ²
7	sp soba	8.00m ²
NETO POVRŠINA		50.52m²
pripadajuća terasa		32.91m ²



LAMELA 1

LAMELA 2



ULICA nova 64

ULICA GRGE ANDRIJANOVIĆA 7.DEO