

DVOSOBAN

TIP 2

LAMELA 2

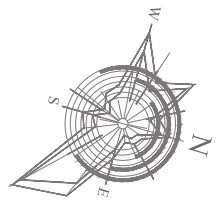
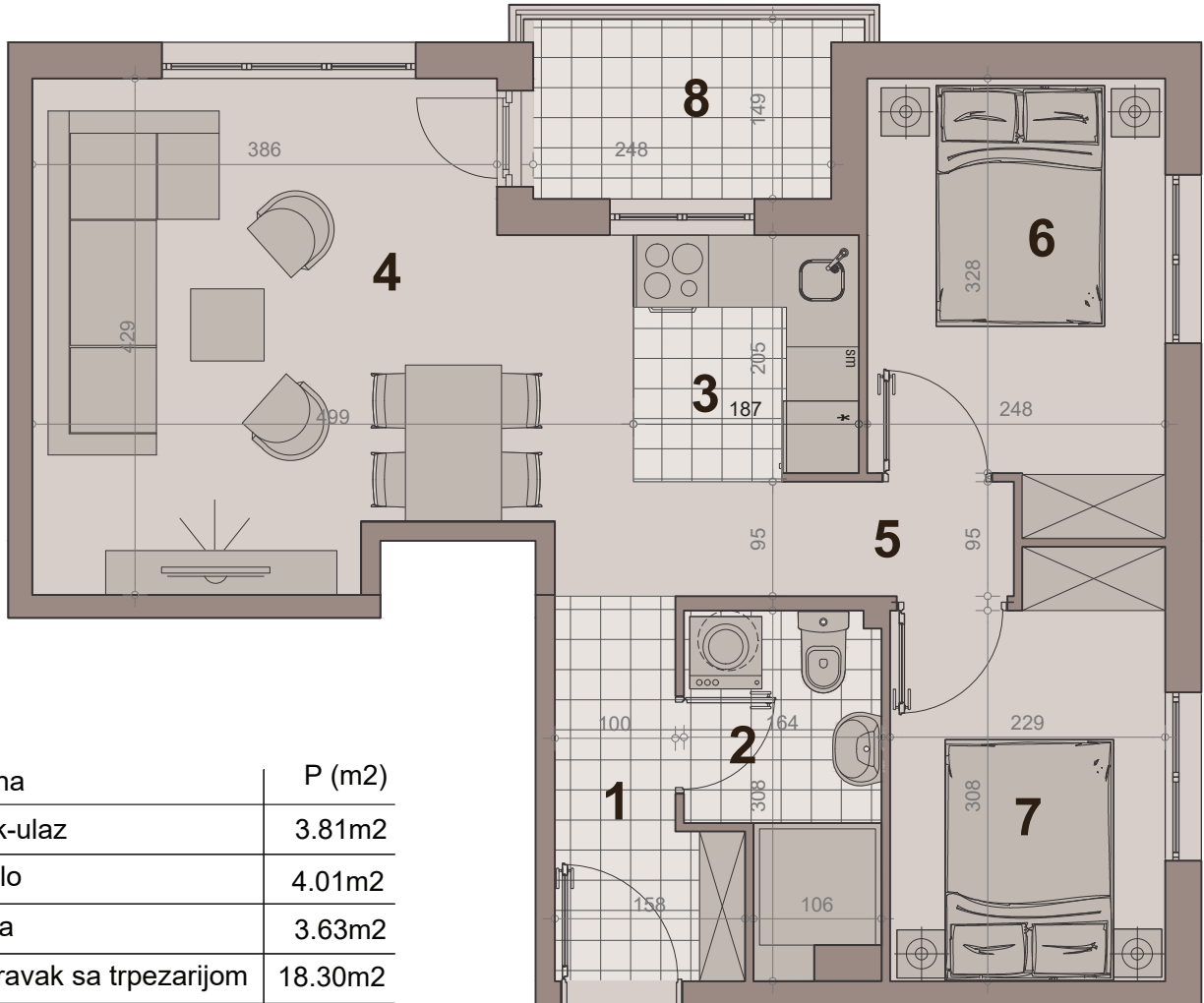
STAN BR. 04

površina : 52.43m²

etaža: prizemlje/ I sprat/ II sprat/ III sprat/ IV sprat



НАСЕЉЕ
ДУНАВСКИ ВЕНАЦ

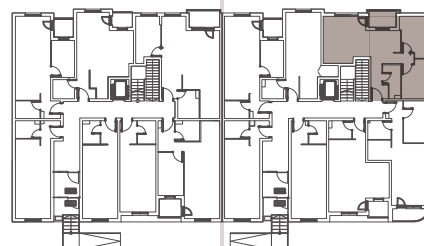


br.	namena	P (m ²)
1	hodnik-ulaz	3.81m ²
2	kupatilo	4.01m ²
3	kuhinja	3.63m ²
4	dn boravak sa trpezarijom	18.30m ²
5	hodnik	3.46m ²
6	sp soba	8.08m ²
7	sp soba	7.38m ²
8	terasa	3.76m ²
NETO POVRŠINA		52.43m²



LAMELA 1

LAMELA 2



ULICA GRGE ANDRIJANOVIĆA 7.DEO

ULICA ANOVA 64

DVOSOBAN

TIP 2

LAMELA 2

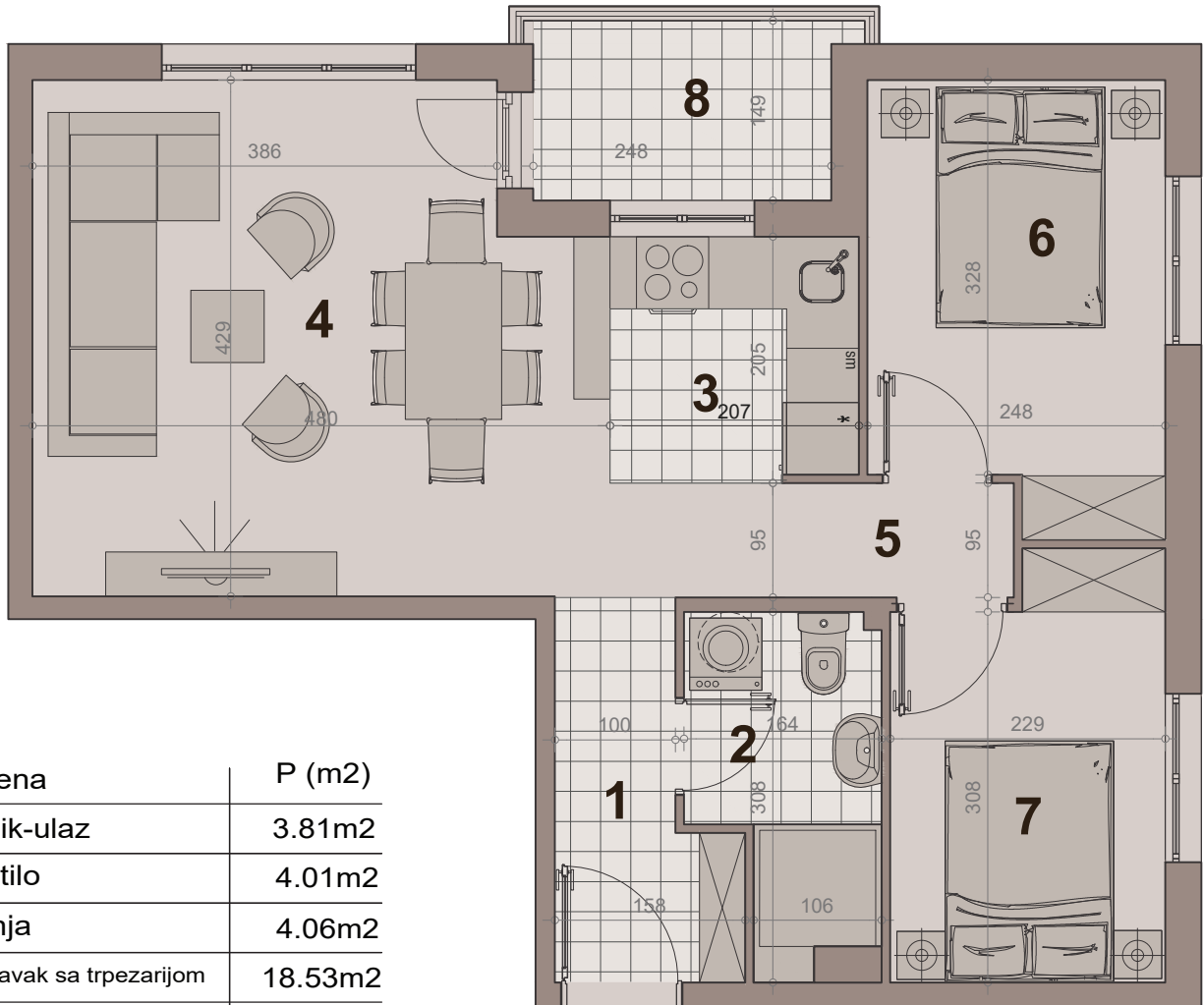
STAN BR. 11,18,25,32

površina : 53.38m²

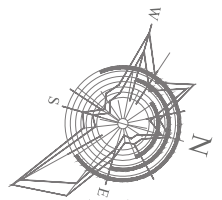
etaža: I sprat/ II sprat/ III sprat/ IV sprat



НАСЕЉЕ
ДУНАВСКИ ВЕНАЦ

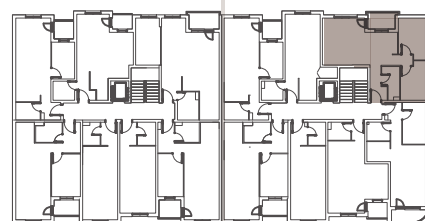


br.	namena	P (m ²)
1	hodnik-ulaz	3.81m ²
2	kupatilo	4.01m ²
3	kuhinja	4.06m ²
4	dn boravak sa trpezarijom	18.53m ²
5	hodnik	3.30m ²
6	sp soba	8.49m ²
7	sp soba	7.43m ²
8	terasa	3.75m ²
NETO POVRŠINA		53.38m²



LAMELA 1

LAMELA 2



ULICA Anova 64

ULICA GRGE ANDRIJANOVIĆA 7.DEO